

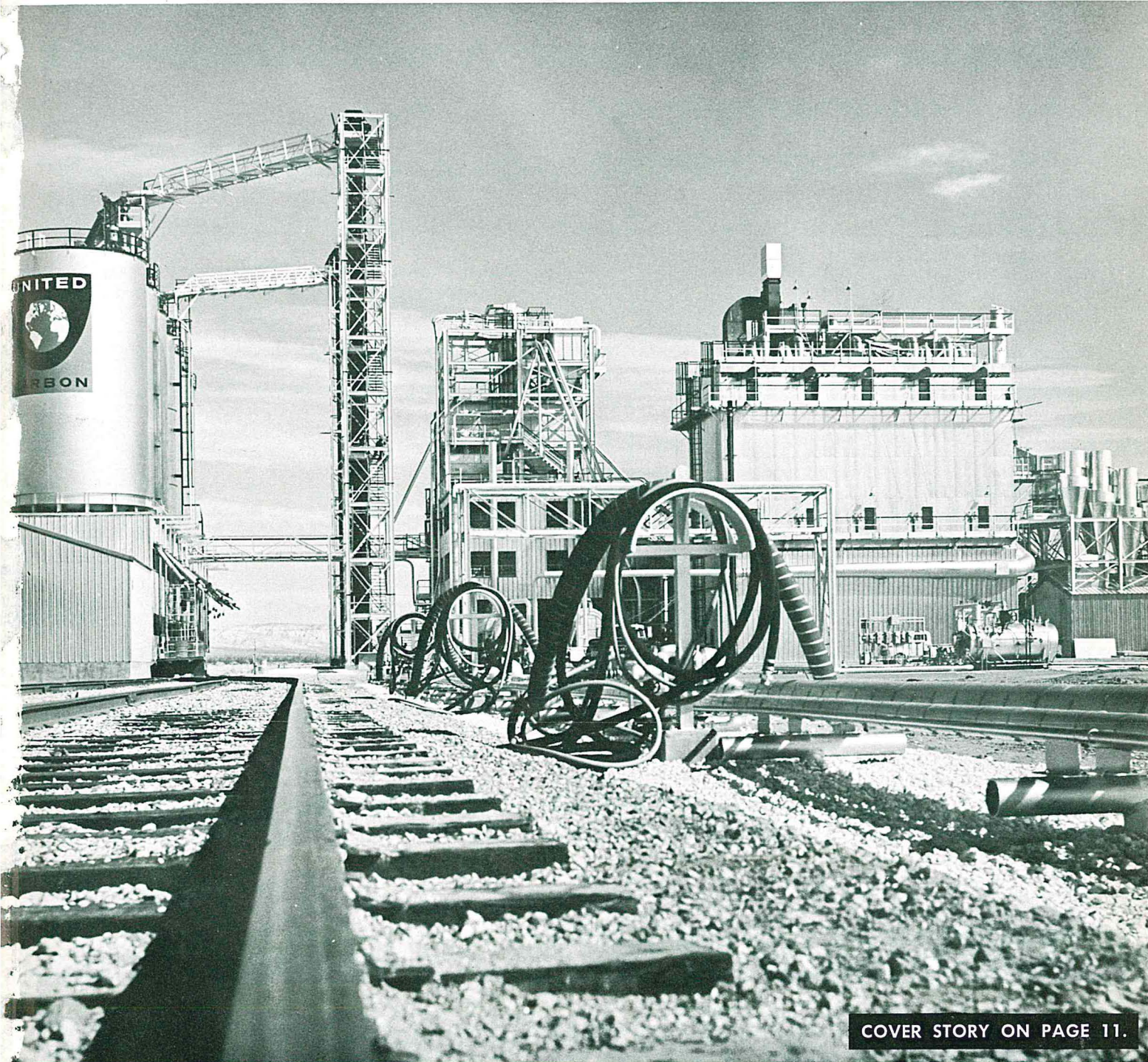
1964

march-april

Vol. 23 no. 2

WHEELABRATOR

PARADE



COVER STORY ON PAGE 11.

In This Issue:

- LORCO AT WHIRLPOOL
- DATA PROCESSING
- A CORPORATE CITIZEN
- WE MAKE MOVIES
- D & F AT UNITED CARBON
- AND OTHER FEATURES



A TIME TO WEIGH THE FACTS

A BACKWARD GLANCE can often be rewarding, especially if it is gauged carefully and poised to make the future brighter.

The year of 1963 most assuredly was one of singular achievements (it was the largest sales volume year on our record), but one tempered with some shortcomings (our profit margin dropped off from the previous year).

To be sure, some of the higher costs of operation that cut into our profits stemmed from legislative sources . . . higher social security taxes, for instance . . . and therefore out of our control.

Customers Demand More

But other costs arose from a number of internal factors. One of these was, and is, the demand by our customers for more special purpose machines to meet the technological advances made throughout the industrial complex. These machines, by their very nature, are more costly to build, erect, and service. They are literally handmade.

Then, too, we met some urgent delivery schedules imposed by stringent customer requests, and this forced the overtime rate to reach unwieldy proportions.

One of the facts seemed paradoxical. The Company picked up the tab on Blue Cross-Blue Shield and this benefited employees. However, the cost of paying for the insurance detracted from the profit picture.

Numerous Factors Involved

So, we can see that numerous facts must be considered when weighing achievements and failures.

One thing we know is that a big sales volume does not necessarily insure big profits. We also know that by decreasing operating costs and maintaining sales volume, we do come up with a healthier Profit-Sharing.

The best way to insure high quality and thereby less rework in the field is to work efficiently. By doing a job well we are insured of the quality that marks us as the leader in our field.

James F. Connaughton

President

WHEELABRATOR
PARADE

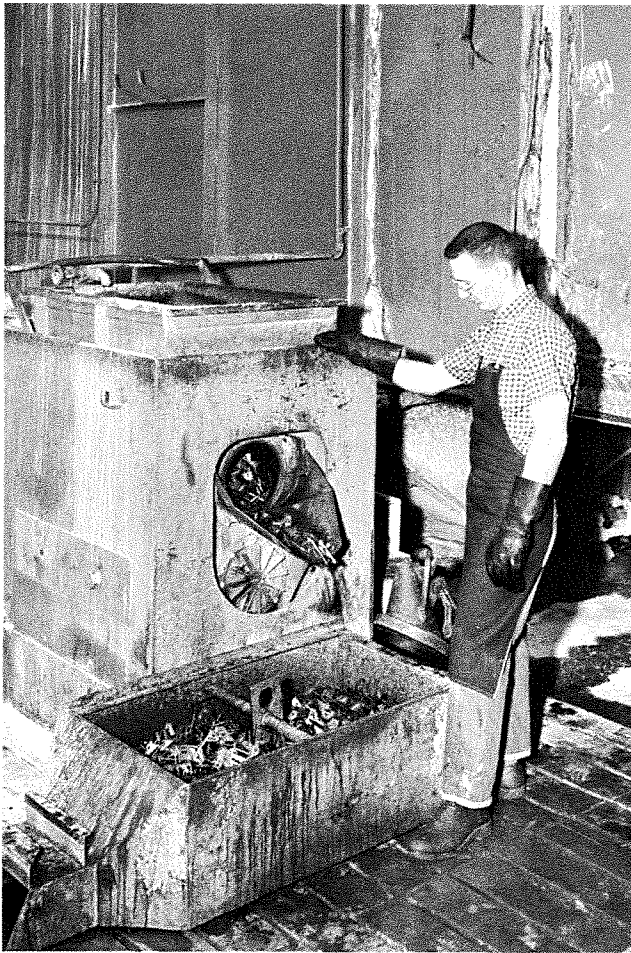
Vol. 23, No. 2

March-April, 1964

Editor — Robert T. Wall
Mishawaka, Indiana

Published for Employees of Wheelabrator Corporation





In this 8 cu. ft. Lorco Vibrator, Whirlpool Corp., Evansville, Indiana, deburrs spacers for refrigerators. The firm previously used barrel finishing by an outside jobber. Since installing the Lorco Vibrator, Whirlpool has cut its finishing costs in half and has obtained the product finish desired.



WHIRLPOOL

Another Lorco Success Story

WHIRLPOOL CORPORATION, Evansville, Indiana, is a major producer of refrigerators for the general public. Like other refrigerator makers, Whirlpool constantly seeks to improve its product and to cut its costs.

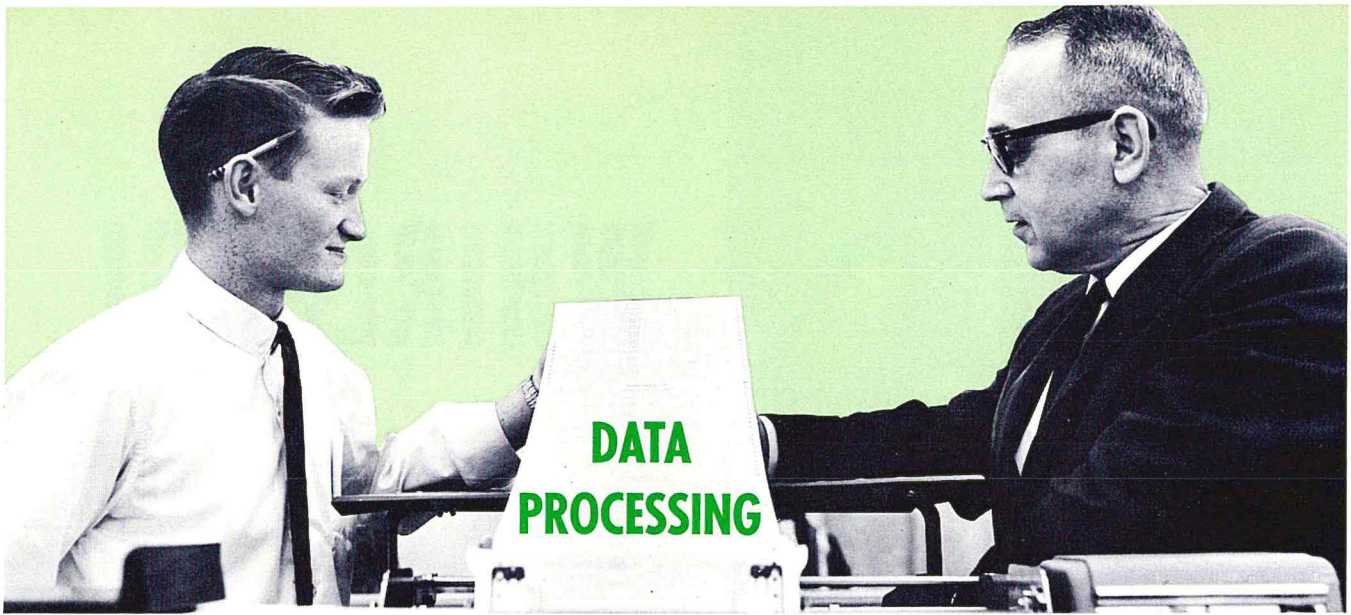
One of its manufacturing processes requires the deburring of a sheet metal stamping used as a spacer for the refrigerators. Whirlpool had previously jobbed out this part.

Since installing an 8 cu. ft. Lorco Vibrator, the desired quality of deburring has been obtained, and the finishing cost has been halved.

Vibratory finishing cleans and deburrs the part prior to a welding operation. Thoroughness of the Lorco deburring prevents possible damage to electrical wiring assembly on the cabinet and possible injury to employees working on the part.

A typical load in the Vibrator consists of 1,600 pieces or 120 pounds. A typical load can be processed in 10 minutes, and daily production runs about 60,000 pieces.

Whirlpool evaluated a number of vibratory finishing machines before selecting Lorco. With the aid of Purchasing and Engineering executives, the decision was made to buy Lorco to get quality and efficiency consistent with economy. The main selling feature of this machine was that deburring and cleaning could be done in one operation.



R. E. Kyle, Manager of Data Processing, and machine operator Jim Newsbaum check the IBM 407 for results of an accounting report. Data Processing Department has greatly improved most financial-oriented operations of the Company.

Speed, Accuracy and Consistency Through **ELECTRONICS**

IN THE DAYS of the Pony Express, it took weeks for a message to travel from coast to coast.

Today, with the advent of improved mechanical and electronic devices, information can be transmitted almost immediately to any far-flung corner of the globe.

The transition from old to new also enters the business operation, such as Wheelabrator's. Compiling essential information must be quick, accurate and relayed to the proper sources for appropriate action.

Gathers Facts and Processes Reports

Playing a vital role in this operation is the Data Processing Department, headed by R. E. Kyle. This group gathers a variety of information and facts, forwarding it in a workable form to other departments.

While Data Processing touches every departmental operation, it more importantly serves General Accounting, Inventory and Production Control, Payroll, and Budgeting. Through its electronic equipment, Data Processing quickly and easily gathers and evaluates information needed for orderly and efficient business operation.

An integral phase of Data Processing is the machine-punch operation. Shown punching IBM cards are, left to right, Lorraine Banicki, Rita Guzman, Lena Thomas, Anna Sokack, and Gretchen Smith.



For example, the entire payroll can be processed in a day less than it took previously, and much more information is included on the individual check.

Besides check writing with IBM machinery, a complete distribution of time and money for each job within the plant is assigned to the department involved. This is an important part of the monthly budget statement sent each department head.

Working with Sales, Purchasing, Production Control, and Accounting, repair part orders are written, while simultaneously maintaining strict inventory on the more than 75,000 part numbers. This control allows the Company to keep only a workable inventory, avoiding the chance for waste in the form of unused parts and storage facilities.

In the daily operation of Data Processing, a team of workers spends from 8 a.m. to 3 p.m. accumulating information. A 3 to 11 p.m. shift evaluates the data, preparing forms and cards electronically for the morning operation.

Changes are Progress

A variety of reports, too, are processed by the group. Personnel, for instance, requires monthly seniority lists, work classification rosters, and insurance facts. Sales is aided by the processing of commission statements for salesmen, and Purchasing receives comprehensive reports, detailing what goods were purchased, from whom, and for what job.

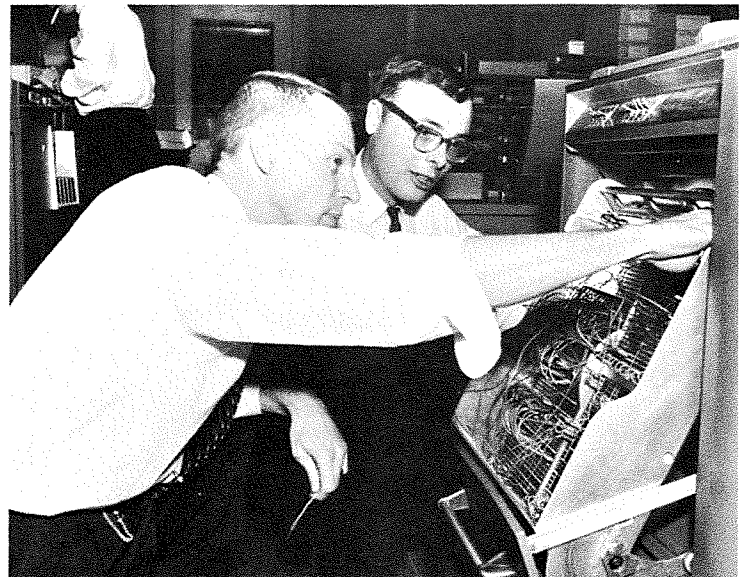
Vast amount of billing for various departments is another facet of Data Processing. Bills must be paid at regular intervals, and this is systematically handled by the IBM equipment.

While the Pony Express era may have a romantic and nostalgic ring, it is nonetheless outmoded and obsolete. Just as the hand posting of figures, and the manual writing of checks and reports is obsolete, so is Data Processing proving that speed and accuracy are necessary to a Company and its employees interested in profits.

Order Entry and Payroll are two important functions within Data Processing. Hazel Henderson, chief payroll clerk, is shown with Edna Fleming and Ruby Edison, order entry clerks.



Keeping an electronic-dominated department in keen and sharp operation has its own peculiar problems. Chuck Slane, Assistant Manager, and machine operator Doug Armstrong check the control panel on the 407 to insure proper operation.





The largest export shipment to leave Mishawaka's plant received a gala send-off late in March. Shown working on one of the crates which was part of the 130-ton order for Overseas Diesel Corp., Varanasi, India, are: top row, left to right, R. E. Kelley, Vice President of Foreign Operations; R. L. Smith, Export Sales Engineer; Bill Fore, Shipping Foreman, and C. R. Cline, Engineering Assistant to the President. Standing are G. F. Wilkins, Export Manager; Helen LaDow, Export Department Secretary, and Virginia Heinzman, Secretary to Kelley.

NEWS

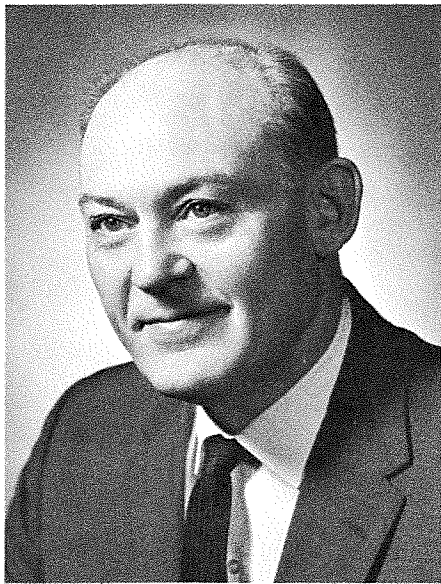
The recent Chamber of Commerce-sponsored Military Procurement conference in South Bend found Wheelabrator in the fore with an exhibit. Planned to bring more government contracts to this area, the event was a pace-setting achievement. Here, Field Sales Manager Jim Barnes explains our product lines to Major Donald Cahall of the Air Force Contract Management office and Eli D. Miller, Chamber of Commerce executive.





Kay Margaret Berger, daughter of Bruce Berger, Project Engineer, won the first "Margaret Hadaway Scholarship" sponsored by the Julianna Club. Jean Bodine presents the official notice while club president Jean Vergon looks on. Miss Berger is a senior at Clay High School, Clay Township, and is planning to enroll at Western Michigan University, Kalamazoo, to study languages with an eventual career in the Department of State on her mind.

AND VIEWS



John Straub, Chief Research Engineer on Blast Equipment and noted authority on shotpeening, will address the Society of Automotive Engineers in Detroit during the national observance of Automobile Week this month. Straub will appear on a panel, discussing the advances in metal finishing.



Winners usually smile and this group of Wheelabrator basketball players is no exception. After copping the WCAA league title this year, the group posed on the stairs of the Pattern Shop. First row: Art Weber and Don Karnes; second row, Leo Daggy and Don Waumans; top row, Bob Simper and Sam Rothy.



WHEELABRATOR CORPORATION:

A *Corporate Citizen*

THEY SAY A MAN is known by the company he keeps. Conversely, a company can be known by the civic responsibilities it meets.

Wheelabrator, as a corporate citizen, is called on by many good, bad, and indifferent organizations purporting to express the good will of the Michiana community. Most of the good ones gain a receptive ear.

In many instances, too, the Company initiates participation in worthwhile events and causes which lead to community improvement. This is as it should be. It is what any good citizen would do.

It logically follows then it is the amount of interest and degree of participation that qualifies a company as a good citizen. It is not the number of organizations or clubs or groups the citizen belongs to.

In the main, Wheelabrator endeavors to support those formal groups which express definite goals toward helping create a better social-educational-economic climate for our area. A good citizen could do no less.

Through employee and Company giving, various United Fund agencies benefit. An example of the UF services is shown here at the Crippled Children's Society.

A new twist on a popular activity was incorporated by Wheelabrator with the latest Junior Achievement group. A female employee, Judy Rallo, left, served as an advisor. Another Wheelabrator first.



One facet of the Chamber of Commerce activities is the Action Course in Practical Politics. Shown during a class discussion are, left to right, Jackie Shupert, Mary Gilliam, Marie Lehman, Mary Lou Rethlake, Mary Helen Driver, and Mildred Boehlein.

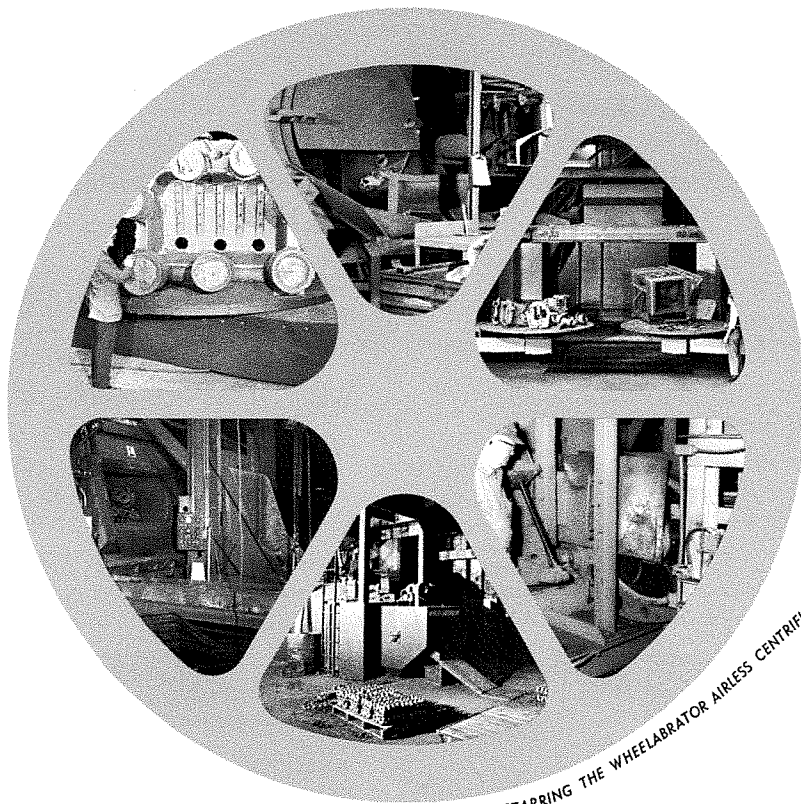
The following is a list that Wheelabrator encourages through active participation or financial aid:

- UNITED FUND
- JUNIOR ACHIEVEMENT
- CHAMBER OF COMMERCE
- YMCA-YWCA
- BABE RUTH LEAGUE
- FOUNDRY EDUCATION FELLOWSHIPS
- INDIANA FIRE CHIEFS ASSOCIATION
- PARTNERS IN PROGRESS
- NOTRE DAME CHALLENGE I AND II
- NATIONAL SAFETY COUNCIL
- AMERICAN OPPORTUNITY PROGRAM
- POLICE ATHLETIC LEAGUE
- ST. JOSEPH COUNTY PAGEANT
- ACTION COURSE IN PRACTICAL POLITICS
- ROTARY, KIWANIS, AND EXCHANGE CLUBS
- JAYCEES
- BENGAL BOUTS
- INDIANA INDEPENDENT ATHLETIC ASSN.,
- and others

Another phase of United Fund efforts can be seen at the Hearing and Speech Center. Other Social-Educational-Economic endeavors are wholeheartedly supported by the Company and its employees.



To Promote Product Lines



We Make

MOVIES

STARRING THE WHEELABRATOR AIRLESS CENTRIFUGAL BLAST WHEEL

Recent modernization trends in the foundry industry promoted a concerted effort to underscore Wheelabrator Corporation's ingenuity within this revitalized industry.

A portion of this drive to re-affirm our already strong position in this market will be illustrative. One of the promotional tools is a movie depicting the wide range of Wheelabrator equipment used to up-date foundry cleaning and finishing operations.

Entitled "Wheel of Fortune", the movie, directed by the Advertising Department, illustrates recent Wheelabrator problem-solving innovations, such as cleaning of hot castings, hard iron cleaning, combined core knock-out and blast cleaning, among others. As an example of rugged and reliable performance of Wheelabrator equipment, the Super Tumblast is prominently featured.

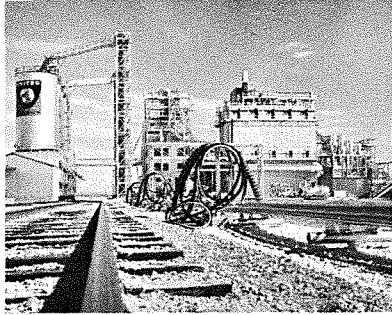
The movie will be used at meetings of various technical societies and associations, and in individual selling situations.

Another movie, "Tool of Production", is nearly completed and will highlight the newer and more

specialized markets such as railroad car cleaning, oil and pipeline cleaning, rubber and plastics, die castings, weldments, drum reconditioning, finishing, and auto parts reconditioning.

"Tool of Production" will be segmented to allow independent showing of each part. For example, the segment on Rubber Deflashing will run about 10 minutes and can be taken from the original film to show to rubber products manufacturers. This form of movie production will also allow other markets to be added independently, building quite a library of films. Each segment, too, can be used with a standard opening and closing reel to give a complete picture of the Wheelabrator story.

A third movie being planned will center on the important structural steel field and be aimed at highway engineers, government officials, architects and others who play a vital role in establishing specifications for structural steel. The movie will educate these people on the reasons for using centrifugal blast cleaning prior to coating to reduce maintenance cost on structural steel, such as bridges, guard rails, and exposed steel in building construction.



The **MYSTERY** OF **BLACK**

WHAT MAKES INK black, tires last longer, and this page easier to read? And more important to us, a major market for Wheelabrator?

It's not an unsolvable riddle, but merely the magical substance known as carbon black.

Carbon black is produced by burning oil or gas in an insufficient air supply. Often confused with lamp-black or soot, carbon black has a decided advantage over soot . . . it can be sold to a great variety of users for industrial purposes. Soot merely messes up hands, clothing, and anything else it gets in contact with.

Rubber products use about 95% of the more than two billion pounds of carbon black produced annually in this country. First added to tires as a coloring agent, the reinforcing properties of carbon black soon became apparent. In today's tires, 20% is carbon black by weight, and tires last between 25,000 and 35,000 miles compared to 3,000 before carbon black.

The black in mascara, carbon paper, bowling balls, phonograph records, and plastics comes from carbon black. The ink on this page contains carbon black. And this is a far cry from the start of this industry in 1864 when one man produced all the commercial carbon black, and sold it for exorbitant prices.

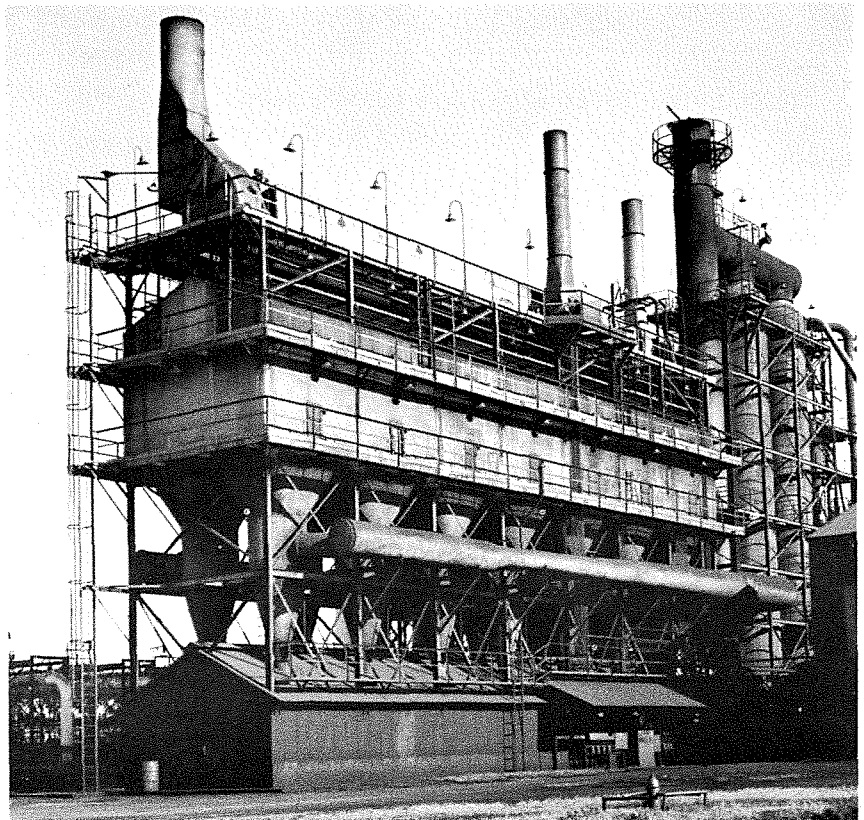
Typical of the installations within the Carbon Black industry is the cover photo and this one at the right. The cover photo and the reduction at the top of the page are United Carbon's Mojave plant, and the one at the right is at Ivanhoe, Louisiana.

Today, the most common grades sell for eight cents a pound.

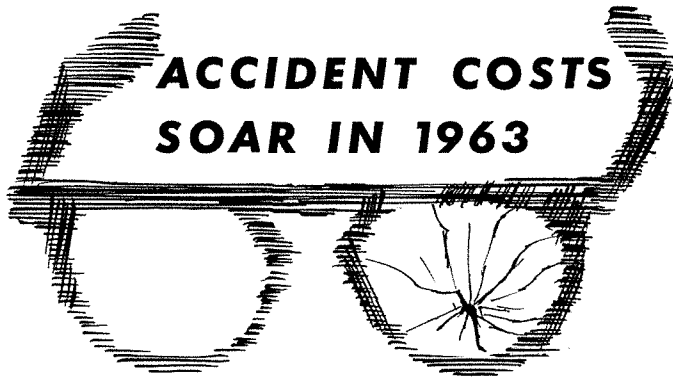
There are two ways to make this paradoxical material: channel process with natural gas and furnace process with oil, and Wheelabrator's Dust & Fume Control Division is the major manufacturer of dust collectors for this industry.

At seven United Carbon installations, for example, the oil or gas is put through a burning process and the valuable carbon black is collected in Wheelabrator bag filters.

Wheelabrator baghouses, thusly, are important to every bowler, every new car owner, every new song hit, every magazine or publication, and every one who writes, paints, or works in industry.



ECONOMIC HINTS



**Increase of 75%
Noted in Plant**

Accidents at Wheelabrator last year cost more than \$25,000, a staggering increase of 75% over 1962.

The recently installed 100% eye safety program tended to keep the figure from soaring even higher.

Statistics point out that while first-aid eye cases increased from 348 to 370, more serious eye accidents, requiring doctor's attention, decreased from 166 to 111. The bulk of the reductions came after the comprehensive eye safety program became official.

Besides the cost to the Company, employees paid a heavy toll in lost wages. Actual time lost in 1963 amounted to 8,032 man-hours compared to 6,648 man-hours in 1962.

Breaking down the money figures, nearly \$11,000 was spent for medical expenses, and another \$10,000 for permanent partial impairment. Some \$5,700 went for compensation to those injured on the job.

Statistics also point out that accidents do not happen where the work is most dangerous; they happen where they are permitted to happen.

The smart worker is a safe worker . . .

IF YOU SIGN A CONTRACT SIMPLY TO GET RID OF A PERSISTENT SALESMAN, IS IT BINDING? Yes, the written contract is evidence of your understanding and the fact you signed to get rid of the salesman is not legal excuse for breaking your agreement and promise.

IF YOU MISUNDERSTAND PART OF A CONTRACT IS IT BINDING? Ordinarily, yes. The written contract is evidence of understanding. If, however, you can prove that the other party purposefully misled you, or attempted to use fraud, you may not be bound. But this problem offers complications. Better consult a lawyer.

IS IT POSSIBLE TO CHANGE A CONTRACT AFTER IT HAS ONCE BEEN SIGNED? This is possible only when your proposed changes are mutually agreed upon by all the contracting parties. Otherwise you have no right to make changes in it.

IS THE FACT THAT A CONTRACT IS "TRICKY" ANY ARGUMENT FOR CLAIMING IT INVALID OR VOID? Yes, but it usually depends on a court's judgment to establish fraud and whether or not a so-called meeting of the minds took place.

WHAT IS THE SIGNIFICANCE OF DESCRIBING GOODS IN A CONTRACT BY THE PHRASE "AS IS"? The phrase "as is" has frequently been used for the seller's protection in contracts dealing with second-hand or damaged goods sold without guarantee. Literally, the phrase means the goods are in the condition they are in at the time of sale. The fact that goods are so described in a contract may not prevent consideration of all verbal descriptions. For if in the judgment of the court, the buyer relied on fraudulent verbal mis-statements of fact as to the "as is" condition, the contract might be declared void or damages may be obtained under a court judgment.

GROUP INSURANCE PAYS FULL COST OF TWO MISHAPS

When Ray Celie, Stockroom employee, received his group insurance policy, he hoped he would not have to use it. But when two serious misfortunes befell his wife, Gloria, four weeks apart, he was sincerely glad he had adequate coverage.

Ray's wife underwent surgery for gall bladder trouble recently and the combined hospital and doctor bill came to more than \$780. Ray sighed a mighty sigh of relief when the Company plan covered the entire cost.

Four scant weeks later, Mrs. Celie tripped while coming down the stairs at home, and sustained numerous facial lacerations and a fractured nose. Surgeons put more than 80 stitches on her face. Plastic surgery was the only answer to restore the facial tissues to normal appearance.

This bill came to more than \$500, including doctor's and hospital fees. All of this cost, too, was covered by the Company group insurance plan.



RUMPLER NAMED SETZLER'S ASSISTANT

Don J. Rumpler, former Regional Supervisor of Lorco Division, has been appointed Assistant to Paul H. Setzler, Vice President of Operations, according to James F. Connaughton, President.

Rumpler joined Lorco in 1960 after 26 years manufacturing experience at General Machinery Corporation, Hamilton, Ohio. He had been General Plant Superintendent there.

Married to the former Dorothy Herklotz, the couple has a son, Don Jr. and a daughter, Jayne. They recently moved to South Bend.



Claude Wiseman, a 22-year veteran, retired from Plant No. 2 last month and received many well wishes from friends and fellow employees. He is shown holding his gift and shaking hands with a co-worker.



Passing PARADE

Seems Cupid has struck Cost Department: **Patty Soens** has become engaged to **Ron Feyos**, and **George Mathewson** and **Judy Howlett** became newlyweds on February 1 . . . The **Frank Claeys** family spent a winter vacation in Florida . . . **Del Beisbrouck**, recently elected secretary-treasurer of the Julianna Club, will get another "honor" in May — she will become a grandmother. Daughter **Carol** works in D & F . . . Mr. and Mrs. **Bill Smith** and family went to Pokagon Park for a weekend, and **Bill** skated across Lake James. He says the exercise did him a world of good . . . Tickets for the Julianna Club dance are going like tickets should. The dance is slated for May 23 at the B & K Hall, Mishawaka. Music by **Eddie Knight's** Orchestra and tickets at \$2 a couple. Contact this reporter, who is serving as Ticket Chairman.

(Millie Balmer, Cost)

Doug Lamb and **Alex Horne** attended the Eastern Canadian Regional Conference of National Association of Corrosion Engineers in Toronto recently. **Bob Campbell** appeared on the panel discussing "Surface Preparation Standards". One difficulty at the conference, held at the King Edward Hotel, were the large crowds queuing to see **Liz Taylor** and **Dick Burton**, also guests at the Hotel . . . **Doug Lamb's** wife, **Alice**, will be honored by the Toronto Girl Guides as Company Captain. She has been quite active in leading outdoor camping expeditions for this group . . . **Bill Wilkinson's** family is real keen on the recently acquired Olds 88 . . . **Doug Durrell** is presently negotiating the purchase of a G.M.C. Envoy "Epic". **Doug** will use the car in some of his road rally efforts . . . **John McKay** spent three weeks erecting a large dust collector at Esterhazy, Saskatchewan, reputed to be the world's largest potash plant. . . Candle-bedecked cakes appeared almost daily in January for the near twins - **Gord Dick**, **Bob Campbell**, **Bill** and **Jim Wilkinson** . . . The mother of **Sid** and **Bill Wilkinson** finally took that southern vacation. She calmed her fears of flying and jetted to Tampa, and is now lolling in the sun at West Palm Beach . . . **Bob** and Mrs. **Campbell** will vacation in Bermuda where **Bob** will tackle the tough Bat and Castle Harbour golf course . . . **Ian Somerville** sustained a severe whiplash injury when his car was struck from the rear by a panel truck. Doctors warn **Ian** that extreme caution must be exercised to avoid another strain or serious damage could occur . . . **Jim Wilkinson** had his wife act as chauffeur while he recovered from an eye infection . . . **Gordon Big Canoe** played host at his old stamping grounds, Lake Simcoe, for **Bob Ross**, **John McKay**, **Doug Durrell**, **Doug Lamb** and **Alex Horne**. The event was slated as a fishing trip, but none were caught. Guess all the fish were on the shore that night.

(Eldred MacMillan, Canada)

Tom Damp has left Mishawaka to enjoy some Florida sunshine . . . **Ralph Hensel** formerly of Maintenance will assume duties of Melting foreman . . . **Danny LaPlace** has moved to his new home on Hunter Lake and he really enjoys it . . . **Claude Wiseman** retired after 22 years with the Company. Part of the time was spent in service and construction.

(Walt Stegman, Plant No. 2)

Harold Books and his wife spent three enjoyable weeks in Florida, boating, golfing, and visiting friends on both Florida coasts . . . **Marie Lehman** spent a week in Minneapolis with her daughter, Mrs. Lowell Dirksen, and her new grandson, **Lance Jon**, 5 pounds, 11 ounces. Although busy, Grandma Lehman did manage to see the Winter Carnival in minus 22° temperature (on TV). She also found time to visit **Virginia Walker**, formerly **Ken Blessing's** secretary, who now resides in St. Paul. Virginia is a fishing enthusiast. She also sends her regards to all at Wheelabrator . . . **Darlene Duncan**, daughter of **Florence Duncan**, recently took first place in cello at the Northern Indiana District Contest at Penn High School. **Darlene** also won the 1963 St. Joseph County Tuberculosis League speech contest . . . **Wayne Parker**, son of **Lee Parker**, has been named finalist in the National Merit Scholarship competition.

(Matt Rutkowski, Purchasing)

Condolences to **Bill Geist** on the recent death of his father . . . **Hazel Pace** who usually brings cookies for the boys was surprised with a gift from the cookie-eaters who bought her a holder for her spoon collection . . . **Fred Weyland** returned to work after undergoing an appendectomy right before Christmas . . . **Oral Emmons** may not always put his tool box lid down but he always snaps the lock . . . **Jewel Bradbury** had a chance to win a free trip to Florida, but didn't quite make it . . . **Doc Stoddard** must be one of those "who would rather fight than switch". He was wearing the black-and-blue trademark for quite some time . . . Assembly foreman **Harold Gay** is retiring in May. **Harold** expects to spend a considerable amount of time at his cabin in northern Wisconsin . . . **Fred Beals** was elected president of the Midwest Pipe Band Association of America at a charter meeting in Chicago. There are seven charter bagpipe bands in the association. **Fred**, who is business agent of the Caledonia Kilty Band of Mishawaka, is credited with being founder and organizer of the association. He recently had two articles published in "The Highlander" a magazine for Scottish activities in the U.S.

(Milferd Gardner, Steel Shop)

Officers of the WCAA Dawn Golf League are **Clyde Hickman**, president; **Ernie Culp**, vice president; and **Bill Cholasinski**, secretary-treasurer. Regular league play opens April 13 . . . **Ermal H. Name** sent two bushels of oranges to his fellow workers on the assembly line from Florida where he spent two weeks at Tampa, Clearwater, and other areas . . . **Alton Wilson**, material handler, recently started working here, driving daily from Vandalia. He plans to have his lake cottage completely remodeled in time for the summer season . . . Another newcomer, **Ralph Ewbank**, finished a course in electronics and fixes radios and television sets in his spare time . . . **Freddie Hildebrandt**, a new dispatcher, is busy readying his new home. He will marry **Pat Harlozinski** on May 2nd. **Freddie** was recently discharged from the Navy and joins his father, **Herb**, and brothers, **Paul** and **Mike**, as members of the Wheelabrator family . . . **Wilbur Sawdon** almost became the life of the party at a relative's wedding recently. He donned a woman's hat, doffed his shoes, and with his shirt tail flapping in the breeze danced a jig for the arriving wedding guests. As fate would have it, all the new arrivals were from the other side of the wedding party and total strangers to **Wilbur** . . . **Ross D. Brower**, son of **Paul Brower** of Layout, will map the ocean floor off the island of Bimini on assignment from the National Science Foundation this summer. Currents in this area have produced unexplained environmental conditions and **Ross** will attempt to discover the causes. The work is part of his study

for a master's degree in Geology . . . **Russ Folk**, whose daughter Nancy, 11, has taken a fancy to trapshooting, may be "touched" for a new 12 gauge shotgun soon. Nancy has been hitting seven of 10 clay birds, and will get the new gun once she tallies 10 of 10.

(Dick Murphy, Steel Shop, Nights)

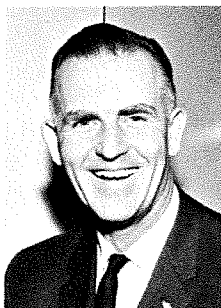
Clyde Snyder (D & F Lab) is now a proud grandfather to little Laura Ann Sloan, born to Mr. and Mrs. **Robert Sloan** January 15. Pat was formerly with the Sales Department, and Bob works in Receiving . . . **Larry Arndt** (D & F Lab) has a new son George Lawrence who was born January 25. This is Larry's second boy . . . **Mike Oliver** (Demo) and Mary Hines were married at Calvary Temple on February 29. They are living in River Park . . . **John Hill** and **Don Rumpier Jr.** have joined R & D. Don's father is in Manufacturing . . . Rock hound **Heamon Castle** (Lorco Lab) spoke before a group of enthusiastic Cub Scouts at Fulmer School in late January. He showed samples from his collection, explaining the source, type, etc., and answered many questions about rocks, fossils, etc. . . . **Dick Spears** who worked in Lorco Demonstration last summer received his degree in Industrial Education and General Industrial Option from Purdue in January and has joined **Sam Hearrell's** Methods and Planning group . . . Since **Bryce McKnight** left for the Army, **Fred Nix** has taken on the opening in the Mail Room. Fred has attended Indiana University and Colorado State . . . **Harvey Van Fossen** has learned a lesson: Don't come to work without a tie. **Clyde Snyder** brought out his emergency bow tie consisting of white, gray, and orange polka dots. Harvey wore it and was subject to such banter as: Does it have a battery? Does it have turn signals? It must have been a good late movie . . . **Ray Gervais'** wife makes fancy cakes for special occasions such as birthdays, weddings, anniversa-

ries, etc. She also made the beautiful cakes for the R & D Christmas party . . . The latest report is that **Ted Copp** is still improving and may be able to do some light work in a few weeks.

(Martha Kemp, Research)

A nice surprise for the **Jim Davidson's** was the phone call from Chicago from son Dennis who flew in from Ramstein Air Force Base, Germany, on a month's leave. Dennis thought he would just walk in on the family, but chickened out and called from the airport. Jim says Dennis is busy seeing all his old friends, male and otherwise. Sounds typical . . . Lure of ski resorts has hit **Jo Wiendels**. She made a second trip to Newaygo for a weekend of skiing, tobogganing, and sitting around the fireplace. What a nice way to spend a weekend, huh? . . . Since Marie Koldyke's marriage to Robert Kratzner in Colton, California, we have many letters from her on what's new in sunny California, including how high the cost of living is . . . Now sitting at Marie's old desk is **Maxene Cary**. Maxene and family had a special holiday recently motoring to Phoenix, Arizona, for two weeks visiting relatives and sight-seeing . . . Latest news from **Clay Dinger's** son, Terry, in Crete is a third stripe on his Air Force blues. After a forty day leave in August he will be stationed in Italy for 18 months. Terry tells Dad that the only transportation available is motor scooters. Maybe Clay can use one on the golf course? . . . **Fred Kroll** and wife, Ingeborg, are anxiously awaiting her parents from Luebeck, Germany. This will be their first visit to America and the first chance to see their 2½ year-old grandson, Christian . . . **Frank Herbison** is welcomed to Mishawaka to assume training duties. His wife, Ruth, and son, Robin, 5, now must dodge boxes and other hazards that come with moving. They just moved from Altadena, California.

(Mary Jo Acrey, D & F)



R. E. GIBSON
Central Region Field Engineer

Ernie joined the Company in 1945 as the first trainee for Junior Sales Engineers. His internal duties, prior to his present assignment, were varied and impressive.

Heading the Standard Equipment Sales department for a time, Ernie became head of Government and Export Division in 1952. And for three years devoted his time specifically to Steel Mill Sales.

Just before going in the field, Ernie took over the Recruiting and Training groups.

A World War II veteran, he served as Chief Staff Officer of Amphibious Flotilla, commanding 36 ships and 1,500 officers and men. He currently holds the rank of Commander in the Naval Reserve and is Battalion Commander of the South Bend area.

Ernie and his wife, the former Mary Ann Myers, are the parents of Teena, Kitty, and Tim. Ernie is a graduate of King College, Bristol, Tennessee, and holds a degree in General Science.

Meet the Field



GORDON DICK
Canadian Sales Engineer

Gordon became a Project Engineer in 1953 in the D & F Control Division, Mishawaka. After a stint as Regional Engineer in Cincinnati, he transferred to Toronto and the Canadian Company.

Before Wheelabrator, Gordon worked for International Harvester, Hamilton, Ontario, in Plant Engineering, and as assistant Chief Engineer at P. B. Yates Machine Company, Hamilton.

A graduate of Queens University with a degree in Mechanical Engineering, he also earned an Industrial Engineering Certificate from McMaster University. Gordon served with the RCAF during World War II.

Active in the Professional Engineers Association, he also belongs to Air Pollution Control Association and the Engineers Club of Toronto. He recently had an article published in *Mining Journal* on underground dust control.

Married to the former Elizabeth Patterson, the Dicks have two sons, Robert and Douglas.

WHAT'S NEW

ANNIVERSARIES: Four veteran employees join the 35-year ranks in March-April. Representing 140 years service are:

- Clyde Snyder** D & F Research
- Jack Metcalf** Machine Shop
- Sam Hearrell** Methods & Planning
- Frank Pedrotty** Sales

One employee celebrates his 30th year. He is:

- Roy Guite** Engineering

Two men become quarter century veterans. They are:

- Ward Correll** Engineering
- Howard Seeley** Engineering

A man and a woman log their 20th years this period. They are:

- Charles Kedik Jr.** Stockroom
- Blanche Null** Production Control



KRUSZEWSKI

supervision of all accounting functions.

Clair Hoffman, formerly Regional Engineer in the Dust & Fume Control Division, will join the W. W. Criswell Division, Riverton, New Jersey, as Sales Manager. Hoffman joined the Company in 1955. In his new post he will report to Len Nelson, Vice President-General Manager at the cloth producing subsidiary.

NEW EMPLOYEES: **Ed Conroy**, native of Collindale, Pennsylvania, joined the Dust & Fume Control as Regional Engineer in Philadelphia. A mechanical engineering graduate of Pennsylvania Military College, Ed had worked in various engineering capacities at several prominent firms in the East. Married to the former Carol Forand, the couple are the parents of daughter Renee, 8, and son Mark, 7. They reside in Marple Township, Delaware County, Pennsylvania.



CONROY

Lawrence J. Bracher, native of Newark, New Jersey, has joined the Sales Department and is in training. Formerly Sales Manager of a Link Belt distributorship and president of his own conveying equipment firm, Larry is a Naval Air Corps veteran, serving in the South Pacific during World War II as a crew member on PBV and PBM aircraft. Married to the former Eileen Flaherty of Boonton, New Jersey, the couple has three children, Lawrence 8, Lisa 4, and Robert 2.



BRACHER

Gerry Lanois, Providence, R.I. native, has joined the Dust & Fume Control Division as Regional Engineer in New England, according to Frank Culhane, Sales Manager. Lanois is a graduate of the University of Rhode Island and earned a degree in Industrial Engineering. He previously worked with United Aircraft and Westinghouse in engineering-sales duties allied to dust and fume control projects. He served as a lieutenant in the Army Corps of Engineers. Married to the former Jean Caswell, the couple has three children, Lisa Jean 5, Gerry Jr. 3½, and Peter Daniel six months.

Others include: **Dale E. Sindors**, Machine Shop; **Vander E. Hunt**, Foundry; **Joseph R. Fotia**, Plant 2; **Franz F. Nabicht**, Plant 2; **William T. Morrow**, Plant 2; **Elmer D. Smith**, Plant 2; **Marvin E. Boren**, Plant 2; **Andrew L. Harvey**, Plant 2; **Howard D. Grove**, Steel Shop; **Joseph R. Runnells**, Steel Shop; **Edward F. Voorde Jr.**, Plant 2; **Virginia J. Clements**, New York Office; **Richard E. Mapel**, Engineering; **Fredric P. Nix**, Office Services; **Mary L. LeMon**, Advertising; **Mary Signorino**, Advertising; **Clyde W. Maurer**, Engineering; **Roderick M. Webber**, Plant 2 Maintenance; **Paul T. Berndt**, Inspection; **Anthony F. Zappia**, Foundry; **John J. Harris Jr.**, Foundry; **Clement S. Labis**, Foundry; **Richard E. Devenney**, Foundry; **Herman DeLaurelle**, Plant Engineering.

Carol Nowacki left the Company last month to await the arrival of her first child. Shown with her and the playpen presented by Dust & Fume Control Division friends are, left to right, Trudy Kirkley, Maxene Cary, Jo Wiendels, Carol, Lucy Seider, Mary Jo Acrey, and Karen VanHoutdreve.

